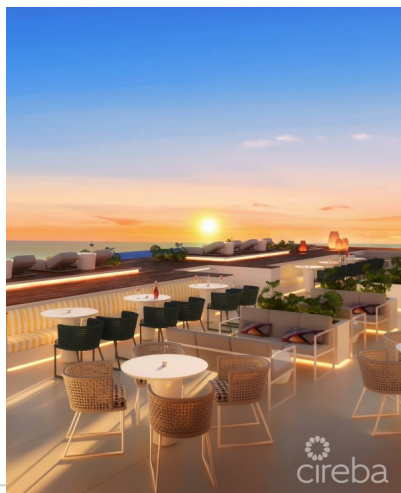


ONEGT RESIDENCES- UNIT 510

George Town Centre, Cayman Islands

MLS# 419898

CI\$769,000





Carolyn Ritch
carolyn@ritchrealty.ky

Poised beside its twin, Unit 508, the spectacular Unit 510 offers another refined expression of the coveted Type C floor plan — a one-bedroom plus den sanctuary that exemplifies the effortless fusion of urban design and Caribbean allure. From the moment you step inside, you’re greeted by flowing natural light and an intuitive sense of space. The articulated wall feature enclosing the bedroom transforms the layout with remarkable flexibility — inviting open sightlines across the residence or closing softly for complete privacy. Every inch of this residence has been conceived for modern living, from the chef-inspired full kitchen with sleek finishes to the open-plan living and dining area that extends gracefully onto a private balcony — the perfect place to unwind as the sun melts into the horizon. The atmosphere is at once sophisticated and relaxed, combining international design influences with the warmth of Cayman’s coastal lifestyle. As part of ONE | GT, owners of Unit 510 gain exclusive access to the development’s world-class amenities, including the private residents’ pool and gym, dedicated parking and storage, and the jewel of the property — the Sky Club. Perched high above George Town, it features an infinity-edge pool, private cabanas, and luxurious lounge and dining spaces designed for connection, wellness, and entertainment. Nestled in the heart of George Town’s most dynamic district, just steps from shopping, dining, and the waterfront, Unit 510 is an exceptional opportunity for those seeking an elevated lifestyle with impressive investment potential. With completion slated for late 2025, this residence captures the essence of modern island elegance — timeless, aspirational, and perfectly positioned for growth. Each unit also includes a \$40,000 furniture fit-out package, enabling owners to seamlessly participate in ONEGT’s rental programme from day one and maximise their return potential.

Essential Information

| | | | |
|------------------------|---------|--------|--------------|
| Type | Status | MLS | Listing Type |
| Residential (For Sale) | Current | 419898 | Condominium |

Key Details

| | | |
|-----|------------|------------------|
| Bed | Bath | Block & Parcel |
| 1 | 1 | 14BH,167UNIT510A |
| Den | Year Built | Sq.Ft. |
| No | 2026 | 717.00 |

Additional Feature

| | | | |
|--------------|--------------------|------------|-----------|
| Pets Allowed | Views | Foundation | Furnished |
| Yes | Water View, Inland | Slab | Partially |

Den
Yes