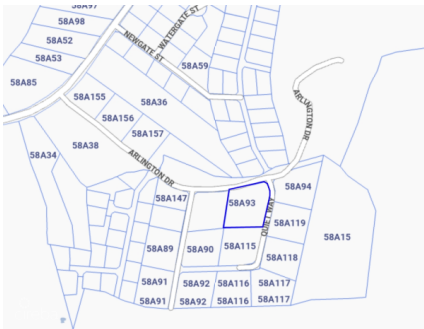


RESIDENTIAL LAND IN FRANK SOUND

Midland East, Cayman Islands

MLS# 420212

CI\$795,000





Carolyn Ritch

carolyn@ritchrealty.ky

Frank Sound Large Land Parcel A Ready-to-Build Opportunity in Cayman's Tranquil North Side Discover this 1.257-acre Frank Sound land parcel in the Cayman Islands. Zoned residential with utilities in place, offering privacy, flexibility, and investment potential. A Rare Opportunity to Build in Frank Sound Positioned within the peaceful and increasingly desirable community of Frank Sound, this 1.257-acre residential land parcel offers an exceptional opportunity for builders, investors, or families ready to create something lasting. With its generous size, established infrastructure, and versatile zoning, this property provides a strong foundation for both personal and investment-focused development in Cayman's evolving real estate landscape. Whether your vision includes a private residence, a duplex, or a triplex configuration, this parcel offers the flexibility to design with purpose while maintaining privacy and long-term value.

Property Highlights at a Glance • Lot Size: 1.257 acres • Zoning: Agricultural/Residential • Access: Easy road access just off Frank Sound Road • Utilities: Electricity and water already in place • Development Options: Single-family home, duplex, or triplex

The size and layout of the land allow for thoughtful planning, maximizing both usability and future appreciation while offering the space many buyers seek but rarely find. Location That Balances Privacy and Convenience Frank Sound is known for its quiet charm, Caymanian character, and growing appeal among long-term residents. Located on the North Side, this area provides a sense of retreat without sacrificing accessibility. Schools, beaches, and essential amenities in the East End are all within comfortable reach, making this an attractive option for families and tenants alike. This balance of tranquility and connectivity continues to drive demand for Frank Sound land for sale, positioning this parcel as a smart choice for those focused on both lifestyle and investment performance.

Development Flexibility with Long-Term Value What truly sets this property apart is its scale and adaptability. At over an acre, it offers a level of privacy rarely available, while still supporting multiple development strategies. Local builders will appreciate the ease of access and utilities already in place, while families can design a home that reflects their values and future plans. For investors, the potential to develop and lease, or build and sell, aligns seamlessly with Cayman's steady demand for well-located residential housing. A Thoughtful Investment in Cayman's Future As demand continues to grow for well-positioned Cayman Islands development land, opportunities like this are becoming increasingly scarce. The combination of location, size, and readiness makes this parcel a compelling addition to any development portfolio or personal plan. Photos courtesy of caymanlandinfo.ky Take the Next Step Contact for more details and explore how this Frank Sound Large Land Parcel can support your vision, whether you're building for today or investing for tomorrow. How do you want to live your life?

Essential Information

Type	Status	MLS	Listing Type
Land (For Sale)	Current	420212	Low Density Residential

Key Details

Width	Depth	Bed	Bath	Block & Parcel
225.00	222.00	0	0	58A,93
Acreage				
1.2570				
Den	Sq.Ft.			
No	0.00			

Additional Feature

Views	Zoning	Road Frontage
Garden View	Agriculture/Residential	225