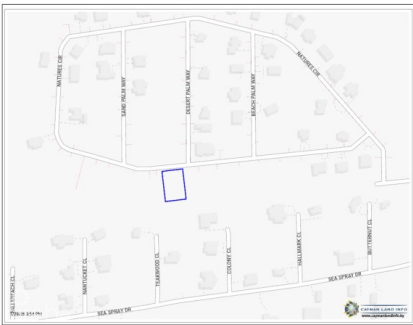


BEACH BAY HOUSE LOT

Lower Valley, Cayman Islands

MLS# 420309

CI\$259,000





Carolyn Ritch

carolyn@ritchrealty.ky

An Elevated Coastal Opportunity Set within the quiet beauty of Beach Bay, this exceptional parcel offers a rare opportunity to design and build a home that reflects your vision of island living. Located on the sea-side of Nature's Circle and positioned on one of the highest elevation points in Grand Cayman, this land combines privacy, elevation, and proximity to the coast, an increasingly hard-to-find combination. Here, the land itself becomes the foundation for thoughtful design, long-term value, and a lifestyle shaped by space, light, and intention. Positioned for Possibility The elevated setting provides natural advantages for drainage, airflow, and architectural flexibility. With generous dimensions, the parcel comfortably allows for a custom-designed main residence, a swimming pool, and a separate guest house or studio, creating room to grow, host, and adapt over time. Whether your vision includes clean modern lines, tropical architecture, or a multi-structure compound, this property offers the freedom to build without compromise. Beach Bay Living Beach Bay is known for its natural coastline, open landscapes, and quiet residential feel, a part of Grand Cayman that remains refreshingly understated. Residents value the sense of space, cooling trade winds, and connection to nature, all while remaining within comfortable reach of George Town, Bodden Town, and the island's essential amenities. This is a location chosen by those who appreciate privacy and authenticity over congestion, and who understand the long-term appeal of land in an area with limited future overdevelopment. A Smart Long-Term Investment Land at higher elevation and on the sea side of established roads continues to hold strong appeal for both end users and future buyers. This parcel represents not only a place to build, but a strategic investment in Grand Cayman real estate, where thoughtful development and scarcity support lasting value. Designed Around Your Life This property invites a different approach, one where architecture responds to land, where outdoor living is intentional, and where space supports how you truly want to live. Morning light, cooling breezes, and the flexibility to design every detail from the ground up make this an opportunity rooted in both creativity and clarity. Elevated land for sale in Beach Bay Grand Cayman Beach Bay sea-side parcel on Nature's Circle High elevation residential land in Grand Cayman Beach Bay lot with space for pool and guest house Opportunities like this are increasingly rare, especially those that offer elevation, location, and design freedom in equal measure. Connect with us to explore how this Beach Bay parcel could become the foundation for your next chapter. How do you want to live your life? Photos courtesy of Lands & Survey Dept.

Essential Information

Type
Land (For Sale)

Status
New

MLS
420309

Listing Type
**Low Density
Residential**

Key Details

Width 93.68	Depth 133.86	Bed 0	Bath 0	Block & Parcel 32D,139
Acreage 0.2884				
Den No	Sq.Ft. 0.00			

Additional Feature

Views Garden View	Zoning Low Density residential	Road Frontage 93.68	Soil Other
-----------------------------	--	-------------------------------	----------------------