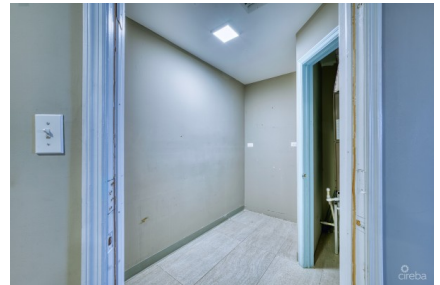


**PROFESSIONAL OFFICE SUITE AT PALM GROVE (UNIT 5)**

George Town South, Cayman Islands

MLS# 420513

**CI\$450,000**





**Carolyn Ritch**  
 carolyn@ritchrealty.ky

Position your business ownership in one of George Town’s most visible and high-traffic locations — the corner of Smith Road and Huldah Avenue. Palm Grove presents a compelling opportunity to own professional office space in a central commercial corridor, making it an excellent option for both owner-occupiers and investors seeking a well-positioned commercial asset. With strong daily traffic and prominent exposure, the property offers excellent long-term value, brand visibility, and accessibility within minutes of Cayman’s major commercial and professional hubs. -- Prime Central Location-- Strategically located just minutes from George Town’s commercial core: \* Approximately 2 minutes to the hospital and Doctors’ Hospital \* Immediate access to banks, retail amenities, and professional services \* Direct route to Owen Roberts International Airport \* Strong daily drive-by traffic providing excellent visibility for professional offices Exterior signage opportunities allow owners or tenants to capitalize on premium roadside exposure in one of George Town’s most active commercial corridors. --Unit #5 - Efficient, Professional Office Space-- \* Approximately 800 sq. ft. \* Second-floor middle unit \* Private bathroom \* Open plan layout well suited for legal, accounting, financial services, consulting firms, or boutique professional practices The building has undergone refurbishment including insulation and soundproofing upgrades, creating a comfortable and productive professional environment. --Ideal for Owner-Occupiers or Investors-- This unit offers the flexibility to operate your own professional office while building equity, or to lease the space to a professional tenant, benefiting from the consistent demand for centrally located office space in George Town. --Tenant & Ownership Convenience-- \* Elevator access \* Wheelchair accessible building \* Individually metered utilities \* Two dedicated parking spaces plus visitor parking \* Professionally managed property --Predictable Operating Costs-- CAM fees are competitive for central George Town and include: \* Common area electricity and A/C \* Elevator servicing \* Cleaning and landscaping \* Exterior maintenance \* Garbage collection \* Hurricane insurance These services help ensure a well-maintained premises and predictable operating costs for owners and tenants alike. Unit #5 can also be combined with adjacent Unit #6 to create approximately 1,600 sq. ft. of contiguous office space, providing flexibility for growing businesses or larger professional teams.

## Essential Information

Type	Status	MLS	Listing Type
<b>Commercial (For Sale)</b>	<b>Pen/Con</b>	<b>420513</b>	<b>Office</b>

## Key Details

Bed <b>0</b>	Bath <b>0</b>	Block & Parcel <b>14D,65H5</b>
Acreage <b>0.3484</b>		
Den <b>No</b>	Year Built <b>2011</b>	Sq.Ft. <b>800.00</b>

## Additional Feature

Lot Size <b>0.3484</b>	Views <b>Inland</b>	Foundation <b>Slab</b>	Zoning <b>Commercial</b>
---------------------------	------------------------	---------------------------	-----------------------------