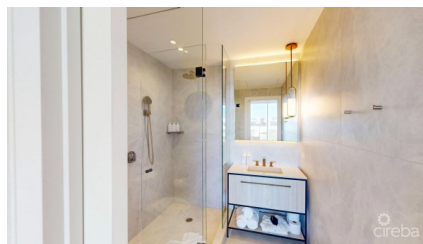
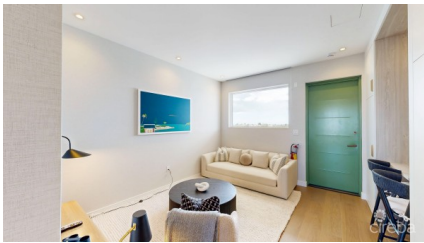


## GROVE TOO X 2

Seven Mile Beach, Cayman Islands

MLS# 420766

**US\$2,350,000**





**Carolyn Ritch**

carolyn@ritchrealty.ky

Welcome to The Grove Too, an exclusive boutique residence located in the prestigious Seven Mile Beach Corridor of Grand Cayman, Cayman Islands. This sophisticated development, inspired by the renowned The Grove, offers a harmonious blend of modern luxury and natural serenity, making it an ideal choice for discerning homeowners and investors alike. This particular unit is a meticulously designed one-bedroom, one-bathroom residence, encompassing 711 square feet of elegant living space. The open-plan layout is enhanced by brand new designer furnishings from Kempa Home, ensuring a seamless blend of comfort and style. The custom German kitchen is a standout feature, equipped with premium millwork, solid brass fixtures, and high-end appliances, catering to both culinary enthusiasts and casual cooks. The residence boasts an oversized balcony that overlooks a lush courtyard garden, designed by the world-renowned Enea Garden Design. This tranquil outdoor space provides a perfect setting for relaxation and entertainment. Inside, oak wood flooring and elegant finishes create a warm and inviting atmosphere, while secure key-card entry, 24/7 manned security, and CCTV surveillance offer peace of mind. Residents of The Grove Too enjoy an array of exceptional amenities, including a private rooftop terrace with breathtaking views of the Caribbean Sea and North Sound. This elevated sanctuary features a resort-style pool, hot tub, sauna, steam cabins, and a meditation garden with daybeds and hammocks. Social gatherings are effortlessly accommodated with entertainment areas for children, gathering spaces for events, and a full-service rooftop bar offering a limited food menu. The Grove Too is constructed to exceed Miami Dade hurricane specifications, ensuring the highest standards of safety and durability. The building features reinforced concrete walls, floors, ceilings, and roof, as well as large missile impact-rated windows and doors designed to withstand Category 5, 220 mph winds. Energy-efficient air-conditioning units with a minimum 19 SEER rating contribute to sustainability and cost efficiency. Situated just a three-minute walk from The Grove, residents have effortless access to world-class shopping, dining, and fitness facilities, as well as the stunning Seven Mile Beach. The development is also conveniently located near Grand Cayman's most prestigious luxury condominiums, including The Pinnacle, The Great House, The Avalon, and The WaterMark. The Grove Too presents a rare opportunity to own a stunning residence in a prime location. Whether you seek an investment, a vacation home, or a full-time residence, this development redefines modern island living. Experience the epitome of luxury and convenience at The Grove Too. These 2 units are being sold separately or as a package deal.

## Essential Information

|                                       |                      |                      |                                    |
|---------------------------------------|----------------------|----------------------|------------------------------------|
| Type<br><b>Residential (For Sale)</b> | Status<br><b>New</b> | MLS<br><b>420766</b> | Listing Type<br><b>Condominium</b> |
|---------------------------------------|----------------------|----------------------|------------------------------------|

## Key Details

|                  |                           |   |
|------------------|---------------------------|---|
| Bed<br><b>1</b>  | Bath<br><b>1</b>          | Block & Parcel<br><b>11D,127H55,H61</b> |
| Den<br><b>No</b> | Year Built<br><b>2026</b> | Sq.Ft.<br><b>711.00</b>                 |

## Additional Feature

|                            |                             |                           |                         |
|----------------------------|-----------------------------|---------------------------|-------------------------|
| Pets Allowed<br><b>Yes</b> | Views<br><b>Garden View</b> | Foundation<br><b>Slab</b> | Floor Level<br><b>2</b> |
| Furnished<br><b>Yes</b>    | Garage<br><b>1</b>          |                           |                         |