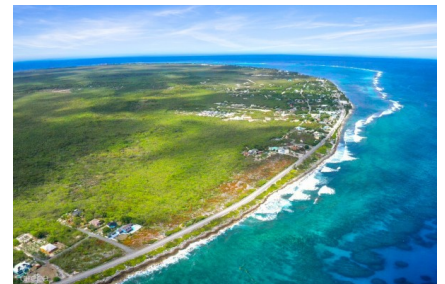
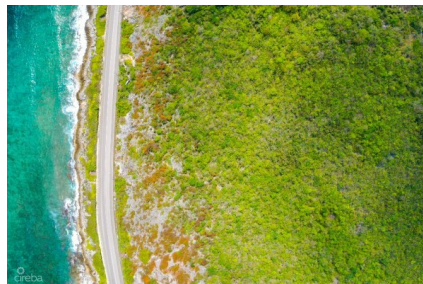
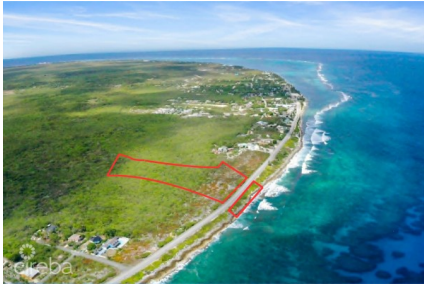


**PRIME 5-ACRE ELEVATED DEVELOPMENT SITE WITH OCEAN FRONTAGE -  
HIGH ROCK, EAST END**

High Rock, Cayman Islands

MLS# 420837

**CI\$1,595,000**





**Carolyn Ritch**  
carolyn@ritchrealty.ky

A rare and lucrative opportunity for developers! This unique 5-acre split parcel offers the ultimate Caribbean canvas, featuring approximately 255 feet of unobstructed ocean frontage paired with a massive inland section that rises to a storm-safe 30 feet above sea level. Zoned Low Density Residential (LDR), this site provides incredible flexibility to maximize your ROI: Luxury Condominiums: Build a sprawling, elevated community. LDR conditional use allows up to 15 units and 24 bedrooms per acre. Exclusive Subdivision: Subdivide into single-family residential lots (10,000 sq. ft. minimum). The natural amphitheater-like elevation guarantees panoramic Caribbean Sea views for the inland builds. Capitalise on the waterfront portion for premium oceanfront views, while leveraging the high-and-dry inland acreage for spectacular sea-view homes. Bring your vision to one of the finest, most versatile development sites available in the tranquil East End today. \*Boundary lines are approximate on photos; Please refer to Land and Registry Screen shots for a more accurate representation.

## Essential Information

Type <b>Land (For Sale)</b>	Status <b>New</b>	MLS <b>420837</b>	Listing Type <b>Low Density Residential</b>
--------------------------------	----------------------	----------------------	--

## Key Details

Width <b>290.00</b>	Depth <b>925.00</b>	Bed <b>0</b>	Bath <b>0</b>	Block & Parcel <b>68A,31</b>
Acreage <b>5.0000</b>				
Den <b>No</b>	Sq.Ft. <b>0.00</b>			

## Additional Feature

Views <b>Beach View, Water Front</b>	Zoning <b>Low Density residential</b>	Sea Frontage <b>255</b>	Road Frontage <b>288</b>
---	--	----------------------------	-----------------------------

Soil  
**Rock**