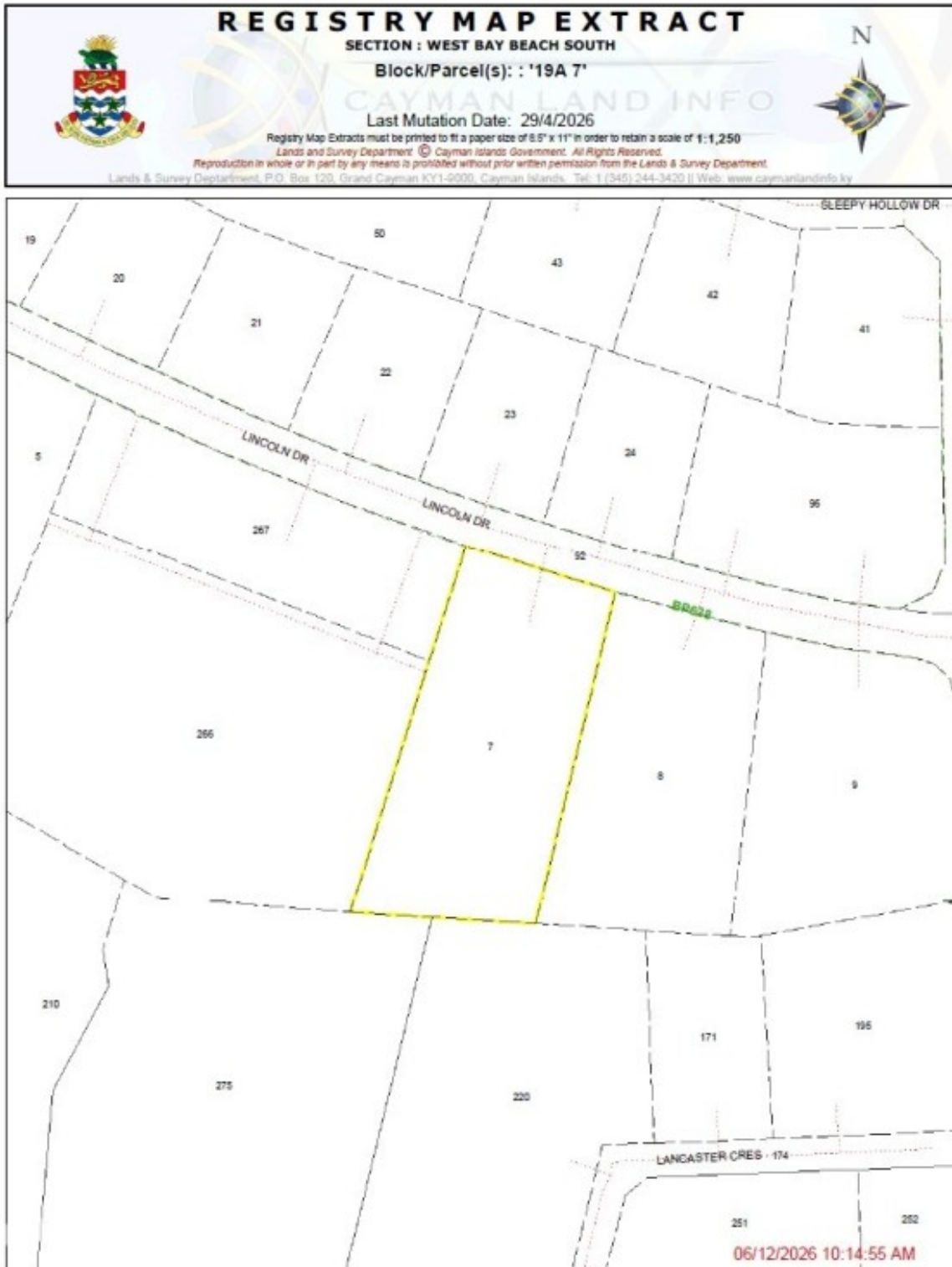


HEAVY INDUSTRIAL LAND- PRIME 1.062 1 ACRE LOT- RARE FIND!!

Seven Mile Beach, Cayman Islands

MLS# 420934

CI\$3,988,888.88





Carolyn Ritch
carolyn@ritchrealty.ky

A rare opportunity, an exceptional 1.062-acre heavy-industrial parcel on Lincoln Drive, ideally positioned for investors, developers or owner-operators seeking a strategic, hard-served site in Grand Cayman. Zoned Heavy Industrial, the lot permits high-value industrial uses including power generation, fuel refining and storage, solid waste disposal, recycling, quarrying/mining and mechanized manufacturing. The property sits within an established industrial and commercial corridor, offering excellent access and operational efficiency for island-wide distribution or heavy-use facilities. Location highlights - Central, highly accessible location close to Seven Mile Beach, Camana Bay, Owen Roberts International Airport and George Town - Immediate proximity to supermarkets, fuel stations, hardware suppliers, restaurants, and other essential services - Strong logistics advantage for suppliers, contractors and industrial tenants This is a rare, development-ready industrial holding in a premier commercial node of Grand Cayman, ideal for buyers seeking strategic scale, permitted heavy-use capacity and excellent connectivity. Contact us to review zoning details, site plans, and development potential.

Essential Information

Type Land (For Sale)	Status New	MLS 420934	Listing Type Industrial
--------------------------------	----------------------	----------------------	-----------------------------------

Key Details

Width 145.00	Depth 310.00	Bed 0	Bath 0	Block & Parcel 19A,7
Acreage 1.0620				
Den No	Sq.Ft. 0.00			

Additional Feature

Views Inland	Zoning Heavy Industrial	Road Frontage 135	Soil Other
------------------------	-----------------------------------	-----------------------------	----------------------