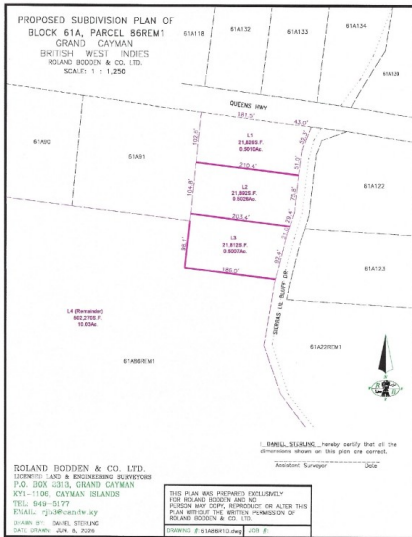


## 0.5010 ACRES | BUILD YOUR DREAM HOME IN EAST END

N.E. Coast, Cayman Islands

MLS# 420964

**CI\$155,000**



**Carolyn Ritch**  
 carolyn@ritchrealty.ky

Set directly across the road from the ocean, this 0.5010-acre parcel presents an excellent opportunity to build a custom home in one of Grand Cayman's most peaceful communities. The property sits approximately 20 feet above sea level, offering naturally well-drained land and an attractive setting for future development, subject to planning approval. East End is known for its quiet surroundings, beautiful coastline, and laid-back atmosphere, while still being within easy reach of restaurants, beaches, diving, and everyday conveniences. Whether you're looking to build your island home or secure land for the future, this generously sized parcel offers flexibility and long-term potential in a location that continues to attract buyers seeking space and privacy. Adjacent half-acre parcels are also available, providing the opportunity to purchase additional land if desired.

### Essential Information

Type  
**Land (For Sale)**

Status  
**New**

MLS  
**420964**

Listing Type  
**Agriculture**

### Key Details

Width  
**224.50**

Depth  
**103.30**

Bed  
**0**

Bath  
**0**

Block & Parcel  
**61A,86REM1L1**

Acreage  
**0.5010**

Den  
**No**

Sq.Ft.  
**0.00**

### Additional Feature

Views

**Inland, Ocean View**