

### 3.235-ACRE DEVELOPMENT PARCEL WITH OPERATIONAL FARM

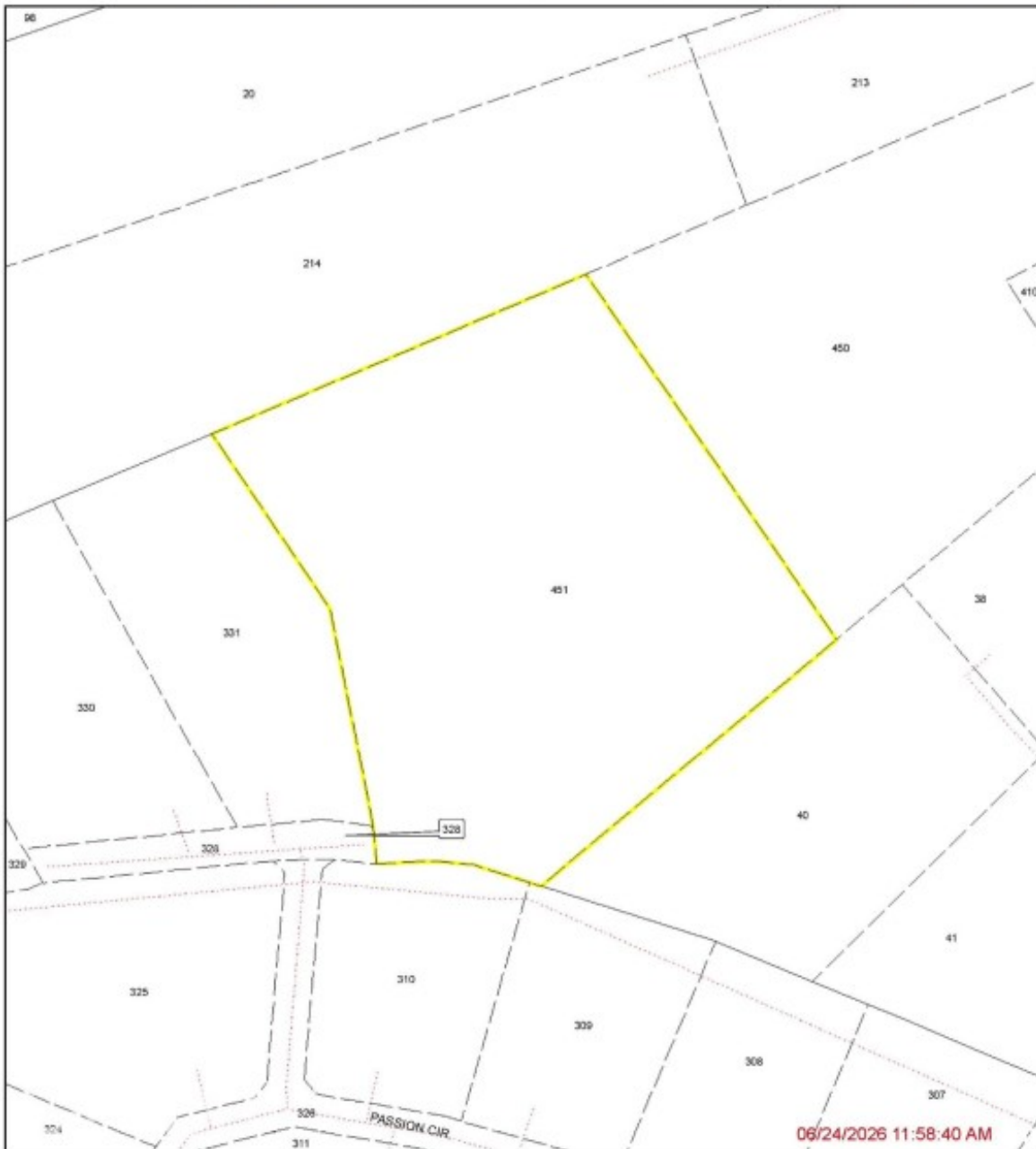
Bodden Town, Cayman Islands

MLS# 420980

**CI\$1,575,000**

**REGISTRY MAP EXTRACT**  
SECTION : BODDEN TOWN  
Block/Parcel(s) : '43E 451'  
CAYMAN LAND INFO  
Last Mutation Date: 27/3/2026

Registry Map Extracts must be printed to fit a paper size of 8.5" x 11" in order to retain a scale of 1:1,250  
Lands and Survey Department © Cayman Islands Government. All Rights Reserved.  
Reproduction in whole or in part by any means is prohibited without prior written permission from the Lands & Survey Department.  
Lands & Survey Department, P.O. Box 120, Grand Cayman KY1-6000, Cayman Islands. Tel: 1 (345) 244 3420 | Web: www.caymanlandinfo.ky





**Carolyn Ritch**  
carolyn@ritchrealty.ky

Excellent opportunity for residential or agricultural development, with the added benefit of a fully operational, income-generating egg farm already in place. Zoned Agriculture/Residential, the property offers flexibility for a buyer looking to subdivide, build out, or hold for future development. The land is partially treed and includes registered road access. Well-positioned to benefit from the planned East-West Arterial expansion (Phases 2 & 3), which will significantly improve connectivity to George Town and the wider island. A rare opportunity to secure a significant parcel in a rapidly evolving corridor with a fully operational farm as an added advantage.

## Essential Information

Type	Status	MLS	Listing Type
<b>Land (For Sale)</b>	<b>New</b>	<b>420980</b>	<b>Low Density Residential</b>

## Key Details

Width	Depth	Bed	Bath	Block & Parcel
<b>397.00</b>	<b>350.00</b>	<b>0</b>	<b>0</b>	<b>43E,451</b>
Acreage				
<b>3.2350</b>				
Den	Sq.Ft.			
<b>No</b>	<b>0.00</b>			

## Additional Feature

Views	Zoning
<b>None</b>	<b>Agriculture/Residential</b>