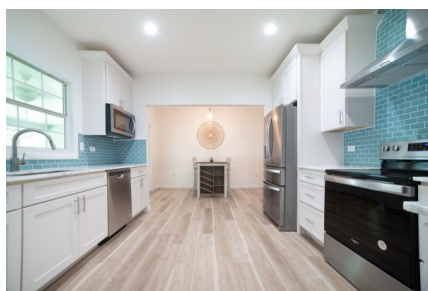


LARGE FAMILY HOME CLOSE TO TOWN

George Town Centre, Cayman Islands

From CI\$5,000





Carolyn Ritch
carolyn@ritchrealty.ky



Kenny Ziemniak
kenny@ritchrealty.ky

Prepare to be amazed by the modern gourmet kitchen featuring pristine quartz counter-tops, all new sleek stainless steel appliances, and custom cabinetry. The ample screened patio terrace provides a direct view of the professionally landscaped grounds, adorned with beautiful Ackee, Frangipani, and Coconut Trees.

Experience ultimate comfort with the fully updated 3-zone new air conditioning system that spans the entire property. Additionally, this bespoke home boasts a unique flex space with its own separate exterior entrance, ideal for use as an office, nanny's quarters, or an extra 4th bedroom.

Comprising 3 bedrooms, 3 bathrooms, a flex space, living room, family room, laundry room, kitchen, dining space, and a screened patio, this charming house offers ample living space to meet your needs.

Conveniently located near schools, restaurants, shops, and within walking distance to George Town, this property is situated in a family-friendly and a small well-established neighborhood.

To arrange a viewing, please call for an appointment today. Rest assured, this home is sure to impress. Small pets will be considered, however, smokers are kindly asked to refrain. The property is available now with a minimum 1-year lease term.
RMLS#3108

Essential Information

| | | |
|-------------------------------|-------------------|--------------|
| Type | Status | Listing Type |
| Residential (For Rent) | Not Active | House |

Key Details

| | | |
|-----|----------------|--------|
| Bed | Bath | |
| 3 | 3 | |
| Den | Available From | Sq.Ft. |
| Yes | Jul 17, 2023 | 0.00 |

Additional Feature

| | | | |
|--------------------|------------------|--------------|--------------|
| Configuration | Den | Kids Allowed | Pets Allowed |
| one level | Yes | Yes | Yes |
| Views | Stories/Building | Furnished | Floor Level |
| Garden View | 1 | Yes | 1 |

