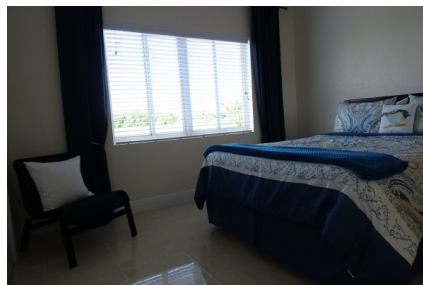
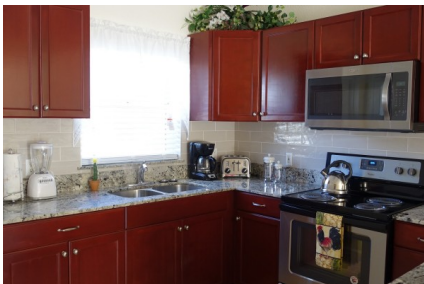


DESERT ROSE SUITES

George Town Centre, Cayman Islands

From CI\$3,000





Carolyn Ritch
carolyn@ritchrealty.ky

Available Now: Spacious 2 Bedroom Townhouse

Location: The townhouse is conveniently located near the hospital, government buildings, and George Town, offering easy access to essential amenities such as walking distance to downtown George Town and its harbour area, excellent shops and all centrally located business locations , Hospitals and more.

Property Description:

Type: The townhouse is a 2-story unit, providing ample space and privacy.

Bedrooms: It features 2 bedrooms, perfect for a couple or single individual who value extra space.

Bathrooms: With 2.5 bathrooms, you'll have plenty of options for personal use and guests.

Amenities:

Central A/C: Stay comfortable year-round with central air conditioning.

Full-size Washer & Dryer: Enjoy the convenience of an in-unit washer and dryer.

Parking: The townhouse comes with two designated parking spaces, ensuring hassle-free parking.

Well-managed Complex: The complex consists of 6 condos, managed efficiently for maximum convenience.

Lease Terms:

Minimum Lease: The minimum lease term is one year.

Restrictions: Please note that the townhouse is only available to tenants without children or pets.

If you're interested in renting this spacious 2-bedroom townhouse, please let us know, and we can provide further details or arrange a viewing. RMLS#3057

Essential Information

Type	Status	Listing Type
Condo (For Rent)	Not Active	Condo

Key Details

Bed	Bath	
2	2.5	
Den	Available From	Sq.Ft.
No	Aug 01, 2023	1400.00

Additional Feature

Configuration
Townhouse

Views
Garden View