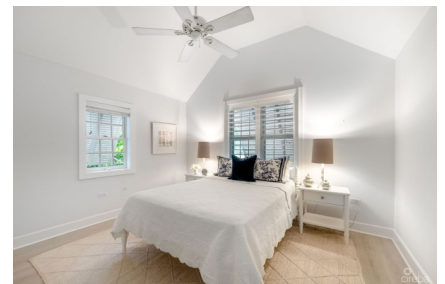


## 35 COCONUT DRIVE

South Sound, Cayman Islands

MLS# 417512

**CI\$1,950,000**





**Carolyn Ritch**  
carolyn@ritchrealty.ky

Welcome to this stunning John Doak designed 4-bedroom + Den, 3-bathroom home sitting on a spacious .44-acre lot in a prime location. As you step inside, you are greeted with a thoughtfully designed floor plan. The home boasts a bright and airy atmosphere, with ample natural light streaming in through large windows. The spacious living room is a cozy retreat, ideal for relaxing after a long day. Each bedroom offers comfort and privacy, with the master suite serving as a luxurious oasis complete with an ensuite bathroom. Step outside to discover a backyard paradise, featuring a sparkling pool and exquisitely landscaped grounds. Whether you're lounging by the pool, hosting a barbecue, or simply enjoying the tranquility of the outdoors, this backyard is sure to become your favorite spot to unwind. Located in a sought-after neighborhood in South Sound, this home offers the perfect blend of comfort, style, and convenience. This home is close to schools and has only a 4 minute walk to the beach. With its spacious layout, and beautiful yard, this home is ready to welcome you with open arms. Don't miss your chance to make this dream home your own!

Essential Information

|                        |         |        |                    |
|------------------------|---------|--------|--------------------|
| Type                   | Status  | MLS    | Listing Type       |
| Residential (For Sale) | Pen/Con | 417512 | Single Family Home |

Key Details

|         |            |                |
|---------|------------|----------------|
| Bed     | Bath       | Block & Parcel |
| 4       | 3          | 15E,205        |
| Acreage |            |                |
| 0.4400  |            |                |
| Den     | Year Built | Sq.Ft.         |
| No      | 1999       | 3560.00        |

Additional Feature

|          |             |           |     |
|----------|-------------|-----------|-----|
| Lot Size | Views       | Furnished | Den |
| 0.4400   | Garden View | Partially | Yes |