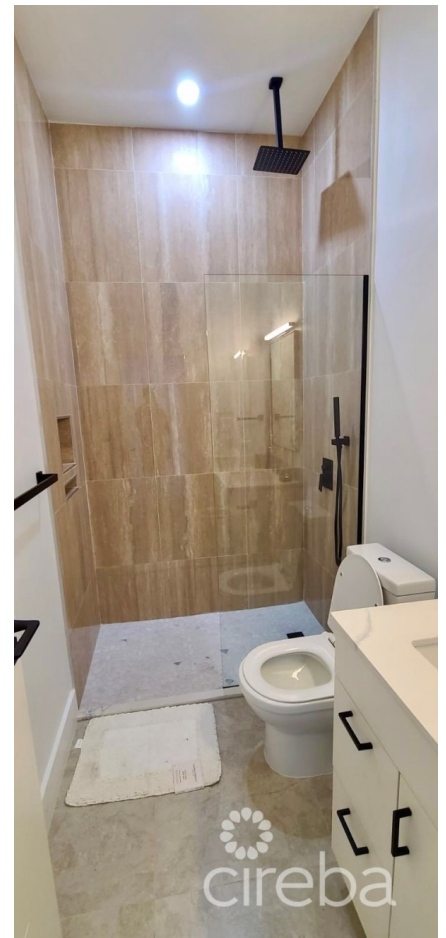
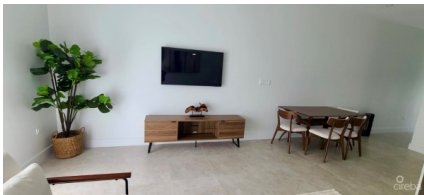


THE MEADOWS PHASE 2 - NAESBERRY LARGE 1 BEDROOM -

W Bay North East, Cayman Islands

MLS# 418909

CI\$495,000





Carolyn Ritch
carolyn@ritchrealty.ky

The Naesberry unit at The Meadows in West Bay, Grand Cayman, is a thoughtfully designed 880-square-foot townhome. The complex itself has to be seen to be appreciated. Phase One is now complete and a thriving community of residents are living in the properties this listed unit is in Phase Two and due for completion in July 2026. Layout: One bedroom, one bathroom, a fully fitted compact kitchen with stainless steel appliances, and a laundry closet with washing machine & tumble dryer. The outdoor space is accessible via French doors from the living area, which is in prime position by the expansive pool. Community Amenities: Residents have access to two swimming pools, a fully equipped gymnasium, and two clubhouses with a games room and recreational areas. The Meadows at Batabano is a 113-home residential development located at the end of the Esterly Tibbetts highway on Batabano Road in West Bay. Built by Edgewater Development who have over 20 years building both luxury homes and commercial and residential property in the Cayman Islands.

Essential Information

Type	Status	MLS	Listing Type
Residential (For Sale)	Current	418909	Semi-Detached/Duplex/Triplex

Key Details

Bed	Bath	Block & Parcel
1	1	9A,639H1407
Den	Year Built	Sq.Ft.
No	2026	880.00

Additional Feature

Views	Floor Level
Pool View	1