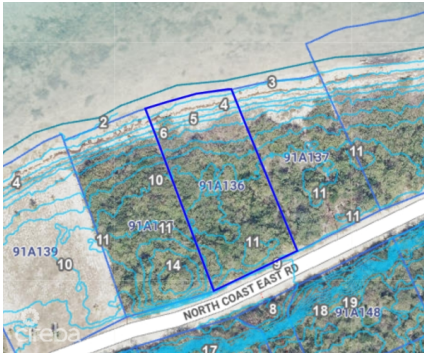


## BETTY BAY 0.38 ACRE, LITTLE CAYMAN OCEANFRONT PARCEL

Little Cayman East, Cayman Islands

MLS# 419211

**CI\$249,000**





**Carolyn Ritch**  
carolyn@ritchrealty.ky

Tucked away on the peaceful northeast coast of Little Cayman, this exceptional 0.38-acre parcel in the coveted Betty Bay offers the perfect canvas for your dream beach house. With an impressive 12 feet of elevation above sea level from the road, you're not just building a home — you're securing peace of mind. Imagine waking up in paradise to the gentle lull of waves and stepping out onto your very own stretch of white sandy beach. It's raw, untouched Caribbean beauty at its finest. Betty Bay is known for its tranquility, pristine environment, and exclusivity — making this a rare opportunity to own in one of Little Cayman's most desirable locations. Whether you're planning a private retreat or a barefoot luxury getaway, this parcel offers the space, elevation, and setting to make your vision a reality. Oceanfront parcels of this quality in Little Cayman don't come around often. Don't let this one slip by.

Essential Information

Type	Status	MLS	Listing Type
Land (For Sale)	Current	419211	Little Cayman/Cayman Brac

Key Details

Width	Depth	Bed	Bath	Block & Parcel
90.00	190.00	0	0	91A,136
Acreage				
0.3800				
Den	Sq.Ft.			
No	0.00			

Additional Feature

Views	Sea Frontage	Road Frontage	Soil
Beach Front	90	192	Rock