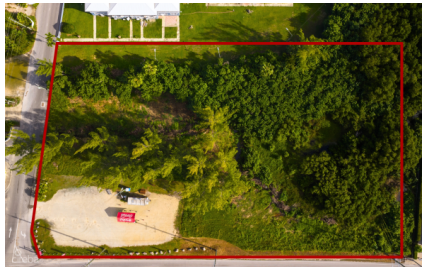
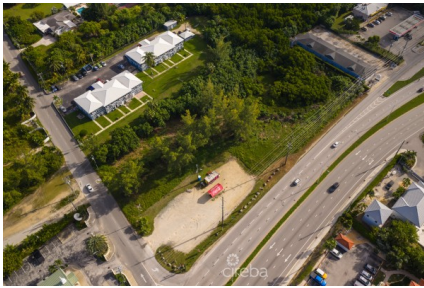


HIGH VISIBILITY COMMERCIAL PARCEL ON SHAMROCK RD

Prospect, Cayman Islands

MLS# 419963

CI\$4,999,000



Carolyn Ritch

carolyn@ritchrealty.ky

Exceptional 2.4-acre site in one of Grand Cayman's most convenient and fast-growing areas. Ideally positioned along Prospect's main corridor with excellent road frontage and direct access to Shamrock Road, this property offers superb visibility and easy access just minutes from Grand Harbour Shops, schools, and main access routes. Zoned Neighbourhood Commercial, the land is level (approx. 3-4 ft ASL), and with connections to mains water and electricity available, investors and developers can move forward with confidence. Suitable for offices, retail, medical clinics, restaurants, or other community-focused enterprises, this property offers flexibility for a vibrant mixed-use project. Endless potential. Unbeatable location. Unlock the potential of this key Prospect location.

Essential Information

Type	Status	MLS	Listing Type
Land (For Sale)	Current	419963	Commercial

Key Details

Width	Depth	Bed	Bath	Block & Parcel
256.80	411.79	0	0	23B,97,98,99,100,101
Acreage				
2.4077				
Den	Sq.Ft.			
No	0.00			

Additional Feature

Views	Zoning	Road Frontage
Inland	Commercial Neighbourhood	Yes